



ACTIVE NEIGHBOURHOOD SCAN



BANBURY NEITHROP & RUSCOTE 22ND SEPTEMBER 2023





BANBURY - ACTIVE NEIGHBOURHOOD SCAN

This report provides an overview of the findings of the Active Neighbourhood Scan undertaken in Banbury (Ruscote and Neithrop wards) on Friday 22nd September 2023. The report highlights how easy it is for residents to be active in Banbury what works well in the neighbourhood, what gets in the way of being active, and what needs to change.

WHAT IS AN ACTIVE NEIGHBOURHOOD SCAN

Active Neighbourhood Scans are a way of understanding how easy it is for residents to walk, cycle, wheel the pavements and road, and to play and engage in physical activity in the parks and green spaces within their community.

It gives an understanding of what works, what gets in the way and what needs to change.

CYCLING / ROAD USE
Active Travel in your neighbourhood - including cycling & mobility scooters.

WALKING / PAVEMENT USE
This includes walking, wheelchair use, scooting, pushing a pushchair, wheeling a walking frame.

PLAY & PHYSICAL ACTIVITY
This is the usability of spaces designed for physical activity in your neighbourhood - this includes being in parks and green spaces.

Scans involve residents, community groups, along with representatives from schools, local authority planning, health, infrastructure and activity teams walking, wheeling, cycling and playing in their neighbourhood and whilst they do **completing a scanning tool focused on three areas of activity**

HOW SCANS WORK

- 1 Participants who live or work in the neighbourhood attend a scanning event, which is hosted at a community centre, leisure centre or school in the neighbourhood.
- 2 The scan participants are given a route to walk or wheel. The routes take them to local facilities for example shops, schools or parks. All routes are within a 30 minute walking distance.
- 3 The participants walk, wheel or cycle the route. On route they answer questions about how easy it is to walk, wheel or cycle and provide scores out of 10 for each question, making notes about things that make the route easy or difficult to access. Routes that go to local parks, playgrounds, outdoor leisure facilities and green spaces also have a set of questions about these facilities.
- 4 Participants are also asked to capture photos of things make it easy, or hard to be active and to jot down their ideas for improvement.
- 5 In total we aim to cover 10-20 routes within the neighbourhood, taking in all the parks and leisure facilities.

Oxfordshire
ON THE MOVE



BANBURY NEIGHBOURHOOD

The information below is taken from the Banbury community profiles. Oxfordshire County Council Public Health is undertaking a programme to work with local partners to create community profiles, to better understand the needs and priorities of communities in Oxfordshire. The goal of the profile is to provide an in-depth understanding of the local health needs and to support community assets. They use both local data and community insight based on an asset-based community development (ABCD) model.

SNAPSHOT OF BANBURY RUSCOTE AND NEITHROP NEIGHBOURHOOD

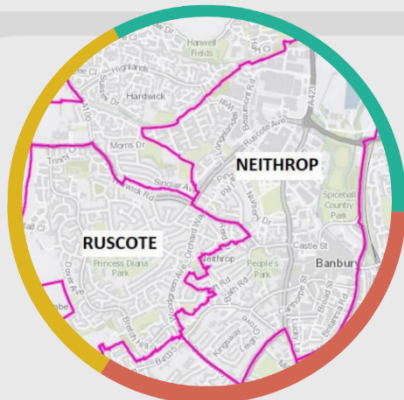
The Banbury Ruscote and Neithrop neighbourhood is formed of two wards. The wards are in Banbury and are in the top 20% nationally, in terms of facing challenges of income and health outcomes. People living in Banbury Ruscote are 63% more likely than the national average to die under the age of 75 from an illness considered preventable. A child born in Blackbird Leys can expect to live 11 years less than a child born in the most affluent parts of Oxfordshire



People in Banbury Ruscote and Neithrop value their green spaces and find them accessible. They value their shops, community centres, charities and local organisations, and the groups and activities that are available. The diversity of the community is celebrated.

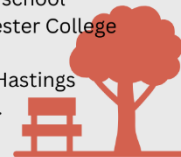


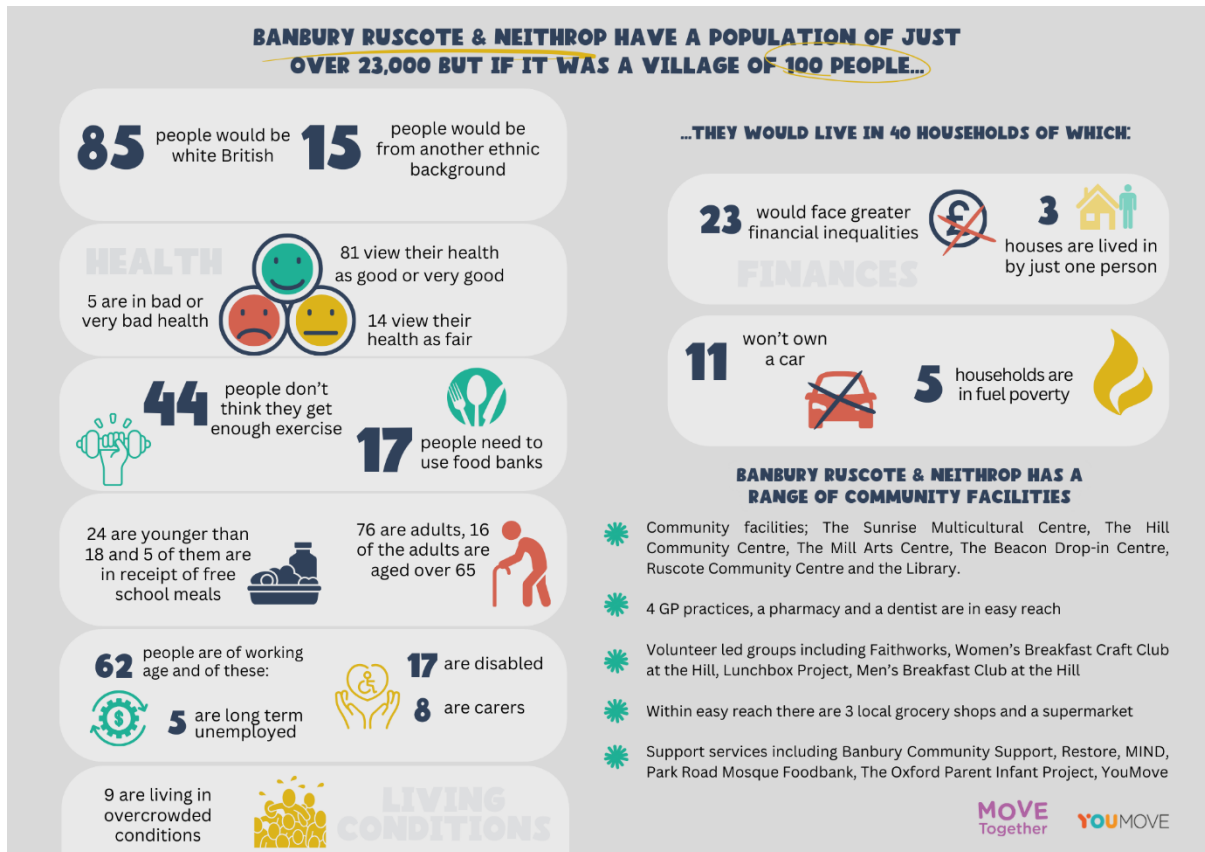
People in Banbury Ruscote & Neithrop are concerned about cost of living, feeling safe in their neighbourhood, drugs and anti-social behaviour, significant minorities do not feel part of the community, loneliness and isolation. Local groups and organisations struggle with maintaining resources.



BANBURY RUSCOTE & NEITHROP HAVE A RANGE OF COMMUNITY SPACES

- * A swimming pool and leisure center
- * 6 primary schools (William Morris, Orchard Fields, St Mary's, St Jospehs, Queensway and Hillview) and a secondary school (North Oxfordshire Academy) and Banbury and Bicester College
- * Parks including, Peoples Park, Princess Diana Park, Hastings Park, Chester Way Playground and Danesmore Park.





THE BANBURY SCAN

We held the scans on Friday 22nd September 2023, one in the morning and another in the afternoon.

A training session was provided before undertaking the scan, to ensure that everyone understood the process and knew how to keep themselves safe whilst on the scan.

The scans started at The Hill in Banbury, a central point within the Banbury Neithrop and Ruscote neighbourhoods. Those who attended the scan included members of the community, from young children, families, and older people, residents, and representatives from Cherwell District Council, Oxfordshire Community Foundation, MyVision Oxfordshire, British Cycling, OCVA, as well as Active Oxfordshire. The participants brought with them a breadth of different backgrounds and experiences.



In addition to the scans, we are planning a session with The Hill Men's Breakfast as well as engaging with secondary schools in the area to understand their experiences of being active in Banbury Neithrop and Ruscote.

Participants reports finding that being involved in the scans was a positive process:

"I really enjoyed being part of the neighbourhood scan in Banbury. It's not often that you take the time to reflect on the environment around you and consider it from different viewpoints. I brought my 2-year-old with me and we completed the session with him in the buggy. In some parts it was impossible to walk down the pavement due to cars being parked on the road. I imagine this would also be a huge barrier to those using mobility aids or who are wheelchair users and how frustrating, difficult, and isolating this could be. Bringing people together to consider these things highlights them as a collective issue and means that the people who are impacted by this aren't fighting for change by themselves."

"I think the session was really useful and I hope it builds more activities in the area."

"I found the Neighborhood Scan session really useful, it took me to parts of the area that I wouldn't normally visit and see first hand what barriers people face in order to ride their bikes safely. It is a really positive step if we can use the concept of these sessions to help make changes to improve peoples access to active travel."



THE ROUTES

The routes were designed to ensure that all parks and assets (such as shops, schools, and parks) in the neighbourhood were accessed. In total, 10 different routes were undertaken, 6 being pavement-use (walking and wheeling) and 4 being road-use (cycling).

The scan included between 25 and 60 questions (dependent on the route) which asked how easy it was to walk, wheel, cycle, or play in In Neithrop and Ruscott.

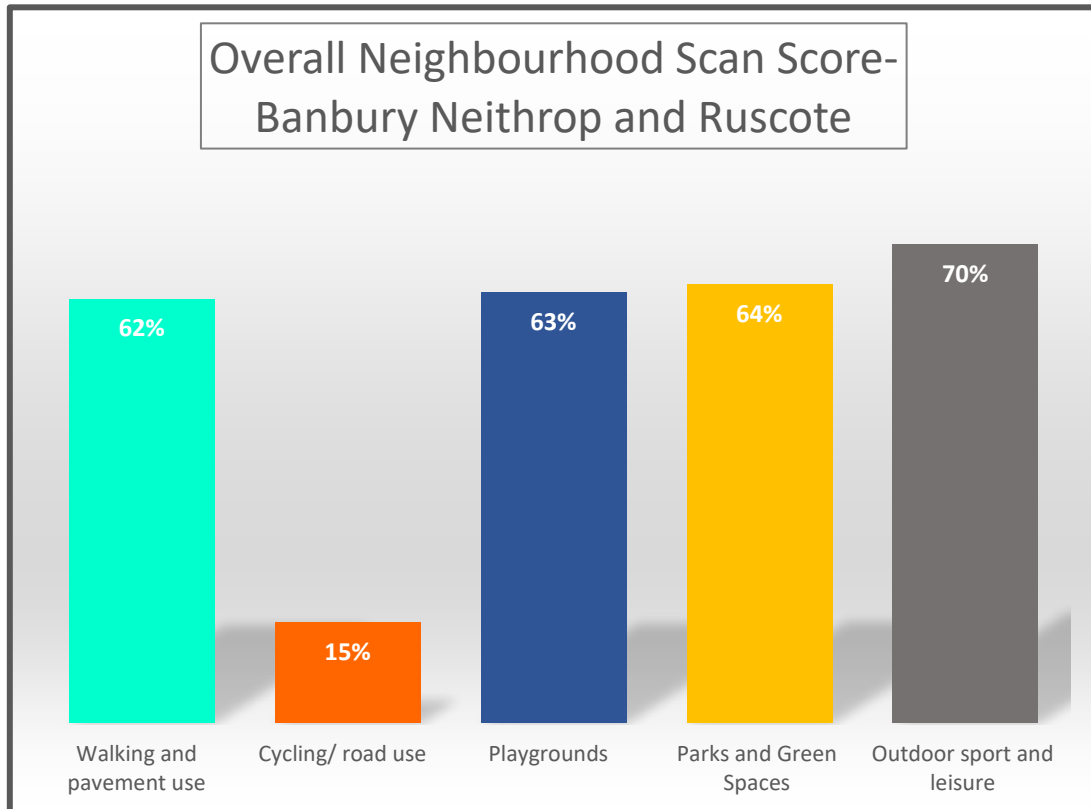
The questions covered:

- Maintenance of paths and pavements
- Feelings of safety, including sense of isolation and lighting
- Availability of cycle lanes (if relevant to the route)
- Environment and attractiveness – this included availability of litter bins
- Accessibility for those wheeling, or pushing buggies, or disabled people



WHAT WERE THE OUTCOMES OF THE SCANS?

Looking across all routes, we found that in Neithrop and Ruscott, there is good provision in terms of outdoor leisure facilities and parks and green spaces, with these areas being generally accessible and valued. Playgrounds are well appreciated but people feel that these spaces need some more care and attention to improve the areas. Participants felt that cycling in the neighbourhoods was less supported, or not supported at all, with the overall score being only 15% out of a potential 100%. The overall scores for Banbury Neithrop and Ruscott are in the below graph:



A score of 100% would indicate that the route or facility is well maintained, has good access for all, and meets the needs of the participants very well.

WHAT DO THE RESULTS DEMONSTRATE?

- The walking experience was highlighted as positive. Within the neighbourhoods, there are a number of walking trails which are marked and contain interactive elements (such as hopscotch), along the way.
- However, it was highlighted that on 100% of the pavement-use routes, some paths require more attention for maintenance as they were deemed unsafe for wheelchair users, people with visual impairment, and those with buggies.
- Participants felt that there was good provision in terms of outdoor leisure facilities with lots of variety for outdoor sports activities, especially in People’s Park, Princess Diana Park, and Trinity Park.
- Parks and green spaces were valued, with 100% of routes visiting these spaces receiving high totals overall. However, on all routes, it was highlighted that a lot of these spaces weren’t accessible for wheelchair users, those pushing buggies, or using walking aids, especially Hastings Park.



- On 100% of routes that went through a park or green space, although it was highlighted as a positive that there are lots of green spaces, there are great opportunities to create more social spaces.
- Playgrounds in the neighbourhoods were considered okay, with there being a range of different parks dotted around the neighbourhoods. However, 100% of routes that visited a playground suggested that the playgrounds could do with some maintenance.
- Cycling in the neighbourhood is less well supported, with all routes scoring less than 25%, and some scoring 0. The overall score for cycling was 15% out of a possible 100%.
 - *"We didn't see any signs/markings for cyclists."*
 - *"Mostly nothing in place to support cycling on the routes that were cycled."*

Routes	Pavement use	Road use	Playgrounds	Parks and Green Spaces	Outdoor sport and leisure
Trinity Park - North Oxfordshire Academy	52%	24%	67%	72%	73%
Nisa local - Woodgreen Leisure Centre	71%	0%			
Hastings Park - St Mary's Church of England School	47%	0%	52%	38%	
Aldi	59%	3%			
St. Joseph's RC Primary School - Princess Dianna Park	56%	16%	67%	76%	67%
Peak pharmacy	78%	9%			
The Mills Arts Centre - Spiceball Leisure Centre	76%	21%			



Londis - Princess Dianna Park	59%	39%	60%	73%	74%
The Sunshine Centre -Hastings Park - Playground Chester Way	55%	22%	41%	44%	
Danesmoor Playground	69%	13%	92%	83%	67%
Average	62%	15%	63%	64%	70%



WHAT DID WE LEARN?

The scans generated a huge amount of information. The groups took over 200 photos with over 225 comments in addition to the score on the local facilities and assets. The information has been analysed to provide consensus findings for the neighbourhood.

WHAT ARE LOCAL STRENGTHS OF BANBURY?

We received a lot of feedback in terms of things which make Banbury special, easy to be active, and what the local assets are. The following areas and features received overall positive feedback:

- People's Park and Princess Diana Park as a whole
- Danesmoor Playground
- Outdoor gym sets at Trinity Park, Princess Diana Park, and People's Park.
- The Hill and The Sunshine Centre were described as great community facilities.
- Prescott Avenue
 - *"Walking down Prescott Avenue – Nice wide roads and quite quiet compared to other roads on our route."*
 - *"Prescott Avenue wide road, felt safer, no near passes from cars."*
- Interactive signs and symbols on pavements around the area to encourage walking.

WHAT ARE THE BIGGEST BARRIERS TO BEING ACTIVE IN BANBURY?

There were some repetitive themes across all the routes which were barriers to being active in the local area:

- Cycling isn't made a priority
 - *"There are barely any cycling lanes or promotion of cycling at all making it very hard to cycle around the areas!"*
- Poor maintenance of paths
 - 100% of routes highlighted that there was overgrown greenery on paths at some point on the route.
 - 100% of the routes highlighted uneven and poorly maintained paths, or paths which were disrupted by tree roots making them difficult to pass over.
- Barriers on paths making it difficult for those wheeling or using walking aids.



- Litter
 - This was commented on by all participants and was identified on every route.
- Lack of formal crossings
 - This was a repeated theme, and on many routes, there were no dips in the kerb, making access difficult for wheelchair users, or those with buggies or walking aids.

FINDINGS BY ACTIVITY TYPE

PAVEMENT USE

WHAT MAKES WALKING, WHEELING, AND PAVEMENT USE EASY IN BANBURY?

Interactive walking

On 100% of the routes, the interactive floor markings were highlighted as a fun addition to their route.

"On Dover Avenue and we spotted the blue shapes on the pavement which is a walking trail great to encourage kids to walk."

(1) *"Walking route markers."*

(2, 3) *"This is fun!"*

(4) *"Activities for children on the pavement."*

(5) *"Fun activity signs."*

(6) *"Walk trail encouraging people to walk."*



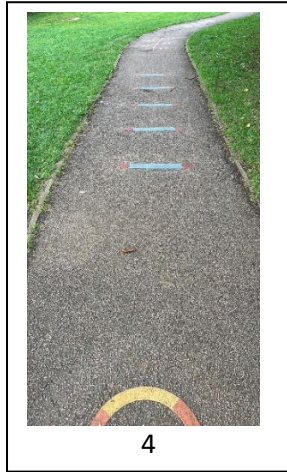
1



2



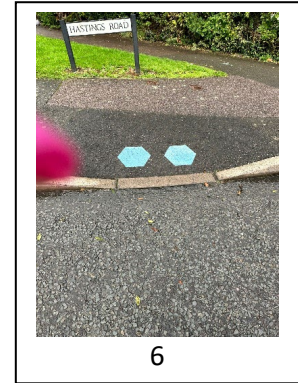
3



4



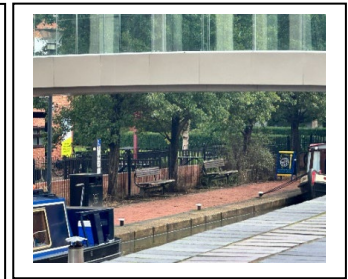
5



6

Good range of benches

"Great selection of places to sit along the river."



Scenery



"Lovely place for walk."

Encouragement to walk

(1) "Walking route sign board."

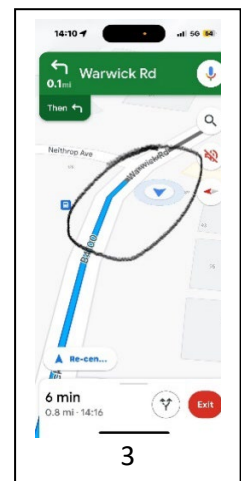
(2, 3) "Lovely bit of pavements separated from cars which can encourage people to walk as it feels safer and nicer than walking right next to the road."



1



2



3



Safe crossings

On some of the routes, there were areas which had good safe crossing, including dipped kerbs and matching crossings, for both those walking and wheeling or using walking aids.

"On the corner of Dover Avenue, there is an example of good drop kerbs that match up."

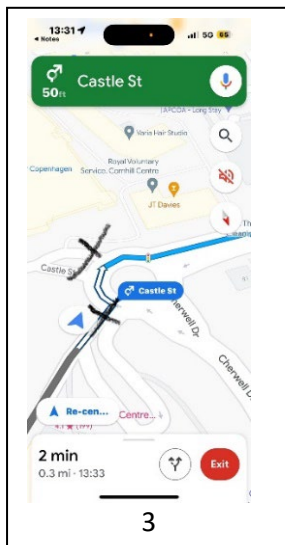
(1) "Good crossing with bumped pavements to indicate the road."



(2) "Good drop kerbs outside Lidl."



(3, 4, 5) "Good drop kerbs."





WHAT ARE ISSUES IN PAVEMENT USE?

Litter and fly tipping

On 100% of the routes, litter on the pavement was mentioned. Litter was particularly noticeable on Castle Street, Dover Avenue, and Edmunds Road.

(1) "Fly tipping on Dover Avenue."

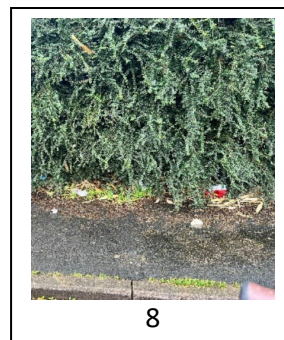
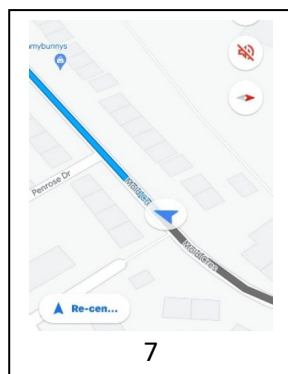
(2) "Behind St Joseph's – fly tipping, graffiti, and litter."

(3) "Litter on St Edmunds Road."

(4) "Trolleys left in bushes by Chamberlain Court Car Park."

(5, 6) "Fly tipping on Caste Street."

(7, 8) "Fly tipping on the corner of The Fairway and Mold Crescent."

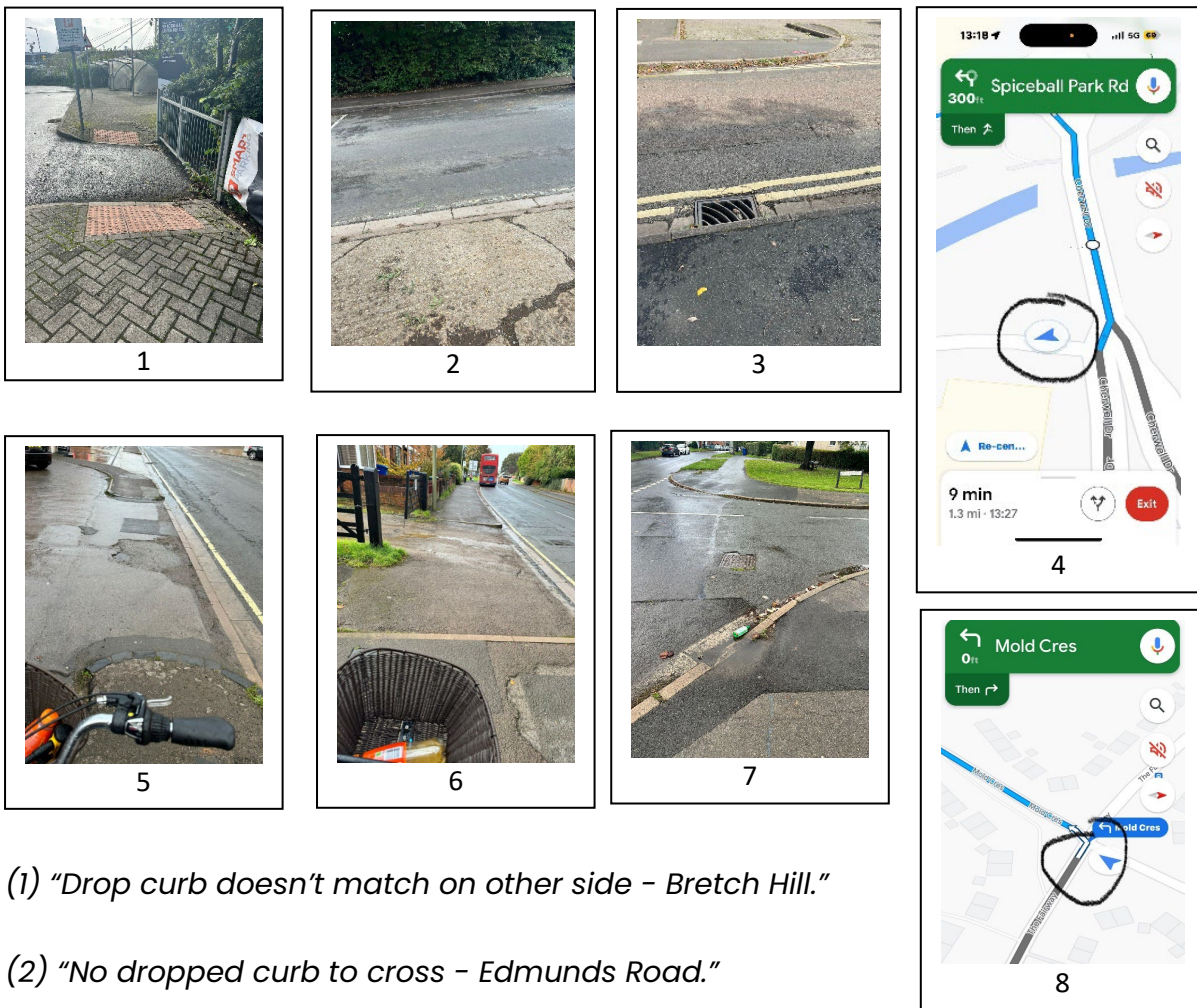




Lack of safe crossings

It was highlighted on 8 routes that there's a need for more formal crossings. Another repeated theme was that some drop kerbs were too steep, making it difficult for people with buggies, wheelchairs, or walking aids, to cross the roads.

"Some dropped kerbs, but they don't match up on either side. This could be developed to provide safer crossings."



(1) *"Drop curb doesn't match on other side - Bretch Hill."*

(2) *"No dropped curb to cross - Edmunds Road."*

(3, 4) *"Very steep dipped kerb, which would make it hard for wheelchair user."*

(5) *"Not a nice road for cycling outside the Texaco on Warwick Road."*

(6) *"Series of not good drop kerbs on Warwick Road."*

(7, 8) *"Very steep drop kerb and doesn't match up either side, feels like it would be inaccessible for people in a wheelchair or pushing a buggy."*



Antisocial behaviour

From their local knowledge, participants raised that antisocial behaviour was an issue. Two residents said that they are aware of antisocial behaviour in the area, and that it puts them off from going out at night, especially in parks or places with little lighting.

There was a recent police Section 60 Order issued for Banbury, which allowed stop and searches in Neithrop and Ruscote.



“A Section 60 order remains in place in Banbury today after it was imposed by the Thames Valley Police yesterday. The order has been put in place in Neithrop and Ruscote, after an incident of violent disorder at The Orchard Health Centre and in Winterbourne Avenue at around 6:40pm on Wednesday (August 23).” – Oxfordshire Live

[Banbury stop and search order remains in place as two men arrested – Oxfordshire Live](#)

“Stop and search introduced to Banbury Neighbourhood after machetes, metal poles and knives used in violent disorder.” – Banbury Guardian

Uneven surfaces

On 100% of routes taken, participants commented on the maintenance of paths and pavements:

“Uneven pathways really impacting accessibility.”

(1) *“Dover Avenue meets Edinburgh Way – uneven and grassy.”*

(2) *“Unsafe surface.”*

(3) *“Uneven pavement where Orchard Way meets the roundabout.”*





(4) "Cracked and uneven levelled pavement near Danesmoor Park."

(5, 6) "Potholes in pavement on Bretch Hill."

(7, 8) "Very bad roads with large potholes in the centre."

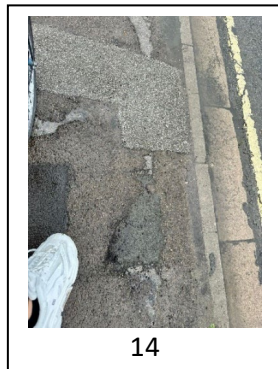
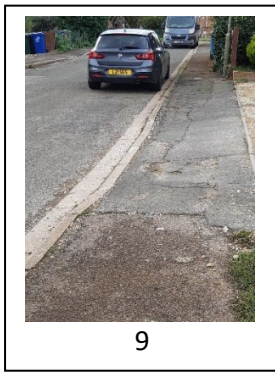
(9) "Uneven and broken path leading into Hastings Park."

(10, 11, 12) "Very uneven paths on Castle Street."

(13) "Uneven surfaces just outside People's Park."

(14, 15) "Lots of uneven surfaces on Warwick Road."





Lack of lighting

The lack of lighting was another issue highlighted on 58% of routes, and participants on 65% of routes highlighted that they wouldn't feel safe on the route alone in the dark. A number of participants also mentioned that they wouldn't feel comfortable letting their children do the route alone. One participant stated that they would not let their child out alone after 4pm.

General maintenance

"Quite a few potholes in the paths, and trees and greenery are overgrown onto some of the paths."

"There are many uneven surfaces making it difficult for buggies, wheelchairs, and other wheeled aids."

"Lots of pavements are poor quality and overgrown."



(1) "Overgrown hedge on Dover Avenue."

(2) "Nettles on footpath by Princess Diana Park. Some litter but otherwise a nice path – wide"

(3) "Tree routes lifting the path."

(4) "Overgrown thorns next to sunshine centre"

(5) "Nice area feels welcoming opposite orchard fields entrance to Princess Diana Park but dip in path could be a hazard."

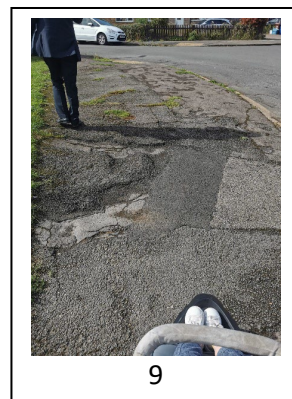
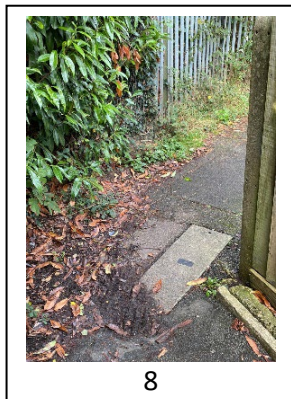
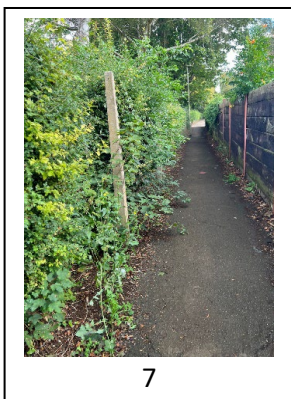
(6) "Overgrown hedge – Mold Crescent."

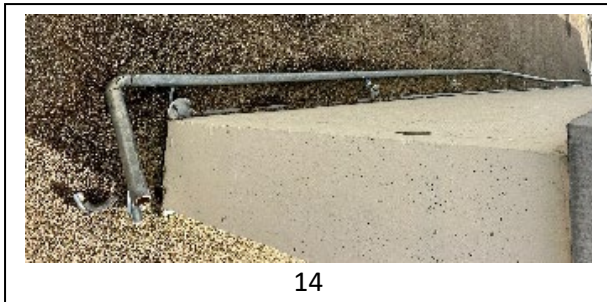
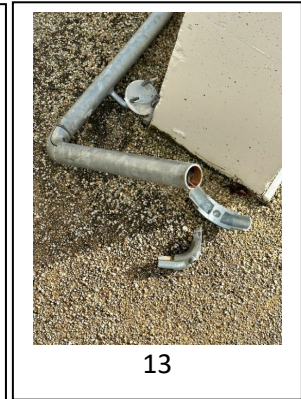
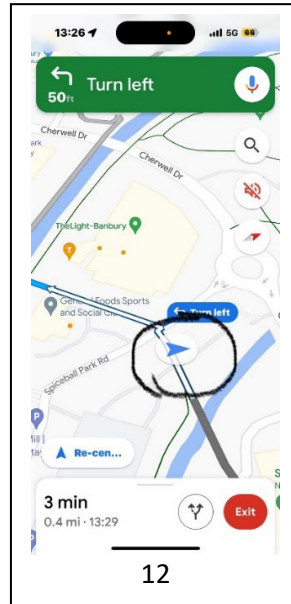
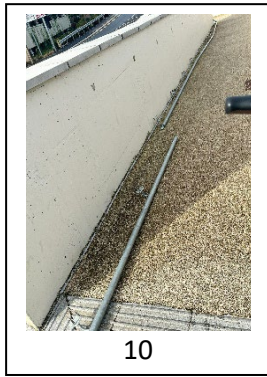
(7) "Bushes overgrown – alley way behind St Joseph's School."

(8) "Tricky corner path joining Sinclair Avenue."

(9) "Really uneven corner – Dover Avenue"

(10, 11, 12, 13, 14) "Car park opposite Spiceball main entrance, over the bridge as you go down the ramp the handle bar is broken off – very dangerous for kids or if people have a fall."





Accessibility issues

Accessibility issues were raised on 40% of the routes, with lots of cars parked on pavements:

"There are lots of footpaths and walkways, but lots of cars park on the pavement throughout my route from the Hill to St Joseph's Primary, then onto Princess Diana Park."

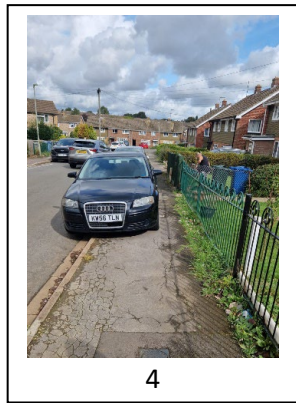
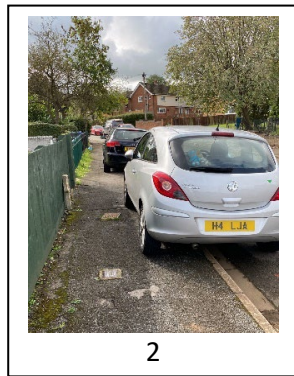
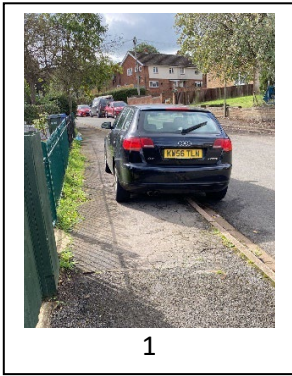
"Lots of cars parked on the pavement making it difficult to get through."

(1, 2) "Tricky for wheeling! Dover Avenue."

(3) "No path for walking or wheeling as you leave The Hill car park, would need to take a different exit."

(4) "No pedestrian space whilst cars on pavement"

(5) "Path goes very thin on the side of the Spiceball and if wheelchair users or someone in a double buggy was taking this route it might be tricky to navigate around."





ROAD USE

Participants highlighted that some key assets in Banbury Neithrop and Ruscote have good cycling parking, such as Spiceball. However, there were lots of opportunities for more facilities.

On 100% of routes, comments were made about the lack of formal cycling paths, safe cycling lanes, the very little cycling markings on the roads, and the lack of encouragement for cycling in general.

WHAT ARE ISSUES IN ROAD USE?

Lack of safe cycle lanes

"No sign of encouragement for cycling near St Mary's School. Very close to fast-moving traffic."

(1, 2) "Opportunity to have some cycle markings to make people feel more comfortable cycling to Lidl."

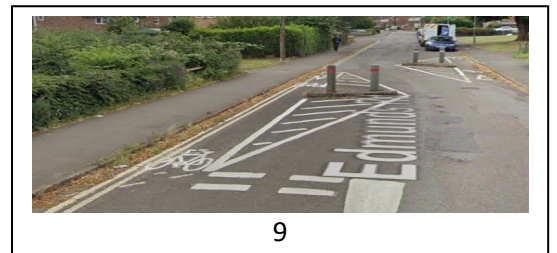
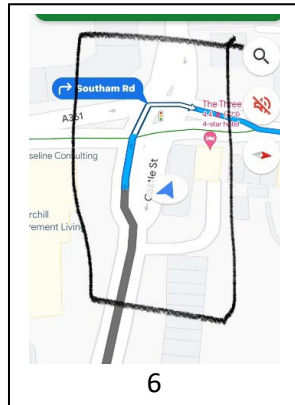
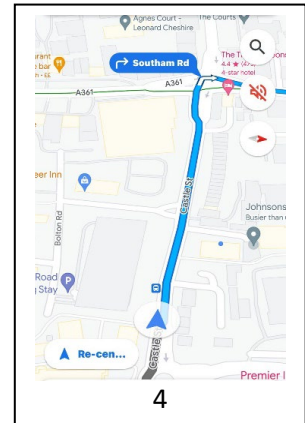
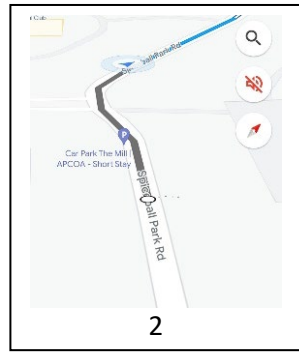
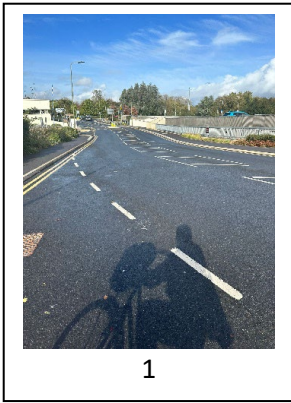
(3, 4) "If you are travelling from the train station to Banbury, you are usually brought this way to most places in Banbury on phone maps, so it would be good to have more cycling signage to encourage more cycling."

(5, 6) "Not a safe junction for cyclists."

(7, 8) "Not a nice road for cycling, felt really unsafe passing through this area as no specified cycle area."

(9) "The roundabout outside Nisa and the pharmacy doesn't have any signage for cyclists, there is lots of opportunity for more promotion for cyclists around this roundabout to make it more safe to use."

(10) "Some cycling signage on Edmunds Road but then it disappears so no direction of cycle safety, only for a small area of the road."



Road surfacing and clarity of cycle routes

On 100% of the routes that were completed by cyclists, participants had to dodge potholes and uneven surfaces.

“Very bad roads with large potholes in the centre.”





Accessibility



On some of the routes, participants noted that there were unnecessary barriers on paths which made it difficult for cyclists to pass through.

“Narrow alleyway from Hastings Park to Prescott Avenue.”



PLAYGROUNDS

WHAT DO RESIDENTS LIKE ABOUT PLAYGROUNDS IN BANBURY?

Participants appreciated the number of playgrounds available in Ruscote and Neithrop: Danesmoor Playground, Princess Diana Playground, Hastings Playground, Trinity Playground, People's Park Playground.

On one route, a participant noted that there is some accessible equipment in the neighbourhood, though there could be more:

"Some accessible equipment at the park in Princess Diana Park but very limited."



WHAT ARE ISSUES IN PLAYGROUNDS?

Accessibility

The scans highlighted that most parks in Banbury needed some maintenance as well as more equipment to make the spaces accessible for everyone.

The grass surfacing in Princess Diana Park Playground makes access difficult for those wheeling.

In general, there is a lack of accessible playground equipment, particularly for those with a physical disability:

"There is a lack of accessible play equipment for disabled or wheelchair users, there needs to be some more sensory areas."



(1) "Really steep access to the park in People's Park, would make it really tricky for buggies and people using wheelchairs."

(2, 3) "Good variety for all ages in People's Park but not much accessible equipment."

(4) "Small gated park in Hastings Park but no paved access."

(5) "The park at Princess Diana Park isn't very accessible as it's all grass between all the equipment."

Safety

The general census from participants was that most parks "Feel safe in the daytime as a whole, not so much in the evening."

Participants highlighted safety concerns specifically with the playgrounds in Princess Diana Park:

(1) "One of the playground areas isn't gated in Princess Diana Park, it doesn't feel safe for families as kids could run off or dogs could get in."



(2) "No gate around the park in Princess Diana Park, opposite side from the skate park."



1



2

Maintenance

There were some issues with the state of maintenance of playground equipment. Additionally, graffiti was a recurring theme which could put some residents off from visiting the local parks.



(1) "Nice little park at one of the entrances to Princess Dianna Park but graffiti could put people off."



PARKS AND GREEN SPACES

In Banbury Neithrop and Ruscote, there is a range of parks and green spaces, including Princess Diana Park, Trinity Park, Hastings Park, People’s Park, and Danesmoor Park.

WHAT DO RESIDENTS LIKE ABOUT PARKS AND GREEN SPACES IN BANBURY?

Participants commented on the availability of outdoor gyms in the area, highlighting that it’s a positive thing to have access to these features in some of the parks in the area (namely Princess Diana Park, Trinity Park, and People’s Park).

Interactive footpaths

On all the routes that visited Princess Diana Park, participants highlighted that the interactive walking signs on the pavement was such an asset to the park.

One participant stated that there were *“Great activities in Princess Diana Park and lots of interactive things for kids and encourages walking.”*

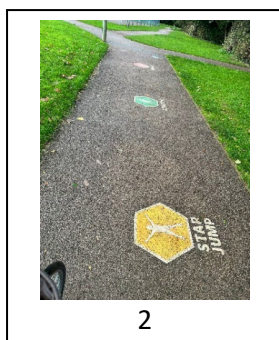
Another participant said that they *“Like how they have put in active play trails on the pathways in Princess Dianna Park”* which makes walking more enjoyable for young children.



1

(1) *“Good activities for children on the footpath.”*

(2, 3, 4, 5) *“Great interactive markings in Princess Diana Park, making walking more fun for children.”*



2



3



4



5



Lighting

There were mixed views around the lighting in parks and green spaces. Some participants felt that there is great lighting in People's Park and Princess Diana Park:

"The lighting in Princess Diana Park is really good."

(1) "Great lighting in People's Park, would be a lovely area to sit after an evening stroll."



(2) "Good lighting in Princess Diana Park."

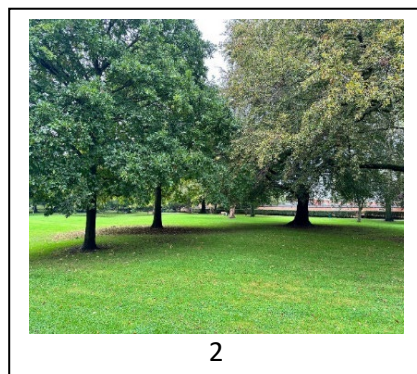
Maintenance

Some of the parks and green spaces in Banbury seem to be well maintained. On 100% of the routes which went to People's Park, participants said it was really well maintained. A good level of maintenance was also highlighted on one of the routes which visited Princess Diana Park.

(1) "Good to see bushes/shrubs cut back maintained in Princess Diana Park."

(2) "Lovely maintained park and trees are a great use of shade."

(3) "Lots of maintenance all the time in People's Park which is good as it's a great space and encouraged people to visit more knowing it's well looked after."





Welcoming signage

On 70% of the routes that visited parks, participants felt that the welcome signage at the park should be attractive.



(1) "Really nice welcome signs at People's Park."

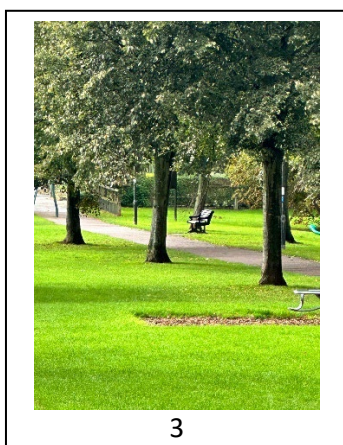
Seating and socialising areas



(1, 2) "Good seating all around People's Park."

(3) "Good seating and place to socialise in Princess Diana Park."

(4) "Benches, bins and lighting in Danesmoor Park."



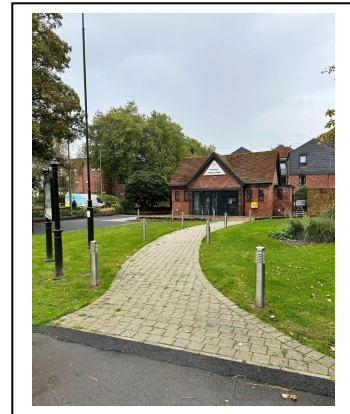
(5) "People's Park – lovely green space and areas to sit."





Great facilities

"Great area for socialising, also has a toilet facility meaning people can really make the most out of their time at the park."



WHAT ARE BARRIERS TO ACCESSING PARKS AND GREEN SPACES?

Litter and fly tipping

Litter and fly tipping were issues raised on 100% of routes which visited parks and green spaces. The issue was particularly noticeable in Princess Diana Park.

"Some of the bins need emptying more often in Princess Diana Park and some need to be repaired."



"Some of the bins in Princess Diana Park were overflowing and there was damage to the dog bins."

(1) *"Overflowing bin in Princess Diana Park."*

Antisocial behaviour

"There are signs of antisocial behaviour in Princess Diana Park."

"It doesn't feel safe for elderly people to be out when it's dark."

"One seating area in Princess Diana Park has graffiti and is insulting."

(1) *"Criminal damage on dog waste bin."*





Lack of facilities

Participants raised that some parks had a lack of facilities. Key issues and ideas were:

- Lack of seating for socialising and picnic benches in Princess Diana Park
- Lack of covered spaces to sit, such as bandstands or shelters
- More social spaces needed, like the café in People's Park
- Lack of toilets and no signage to direct people to the closest facilities – this was identified as a real issue for those with children, older people, and those with long-term health conditions.

Underutilised and misused green spaces

On 100% of the routes that went through a parks and green spaces, participants said that there was a lot of underutilised space, which could become opportunities for better usage, such as community gardens and wildflowers.

"Lots of green space in Princess Diana Park, could some of it be developed into a community garden."

(1) "Opportunity for green space corner of Edinburgh Way and Dover Avenue."

(2) "Opportunity of green space on Bretch Hill and Edinburgh Way corner."

(3) "Could plant wildflowers."

(4) "Opportunity – Diana Park"

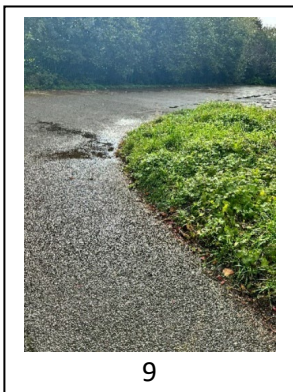
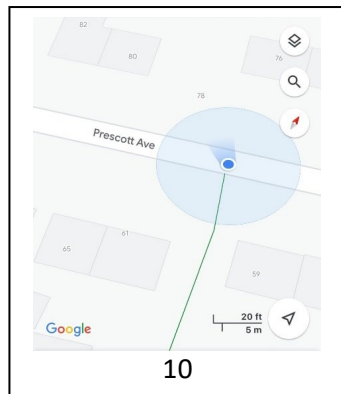
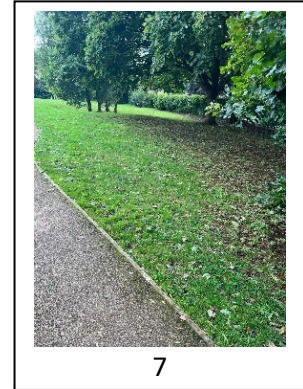
(5) "Green space - Bretch Hill"

(6, 7) "Lots of green space in Princess Diana Park - could some of it be developed - community garden, more sports facilities."

(8) "Great green space, but a little underutilised, could have some more areas to socialise or some markings for sports and would be nice if it was a bit more accessible for people who are using wheels."

(9, 10) "Underutilised space could be used as a community garden."

(11) "Hastings Park has a nice amount of green space but a lot of it feels like it's underutilised, could have more social space."





Isolation



(1) "Very isolated corner in Princess Diana Park and very bad lighting, feels unsafe in the day so would feel even worse at night."

(2) "This area in Princess Diana Park feels quite isolated."



Maintenance

Dog mess and graffiti features as persistent issues within green spaces.

(1) "Dog mess in Princess Diana Park. Generally good walkway, well maintained. Surface a bit bumpy, might not be great for scooters but generally good."



(2) "Shelter and seat, which is great, but the graffiti and damage."



Accessibility

(1) "Hastings Park open green space but very inappropriate/no access for people with mobility issues."

(2) "Hard access at some of the side entrances at People's Park making it difficult for people with buggies or wheelchair users to access certain entrances."



(3) "Very steep and narrow entrance by Princess Diana Park."

(4) "Access into Hastings Park, could be tricky with these bars up."

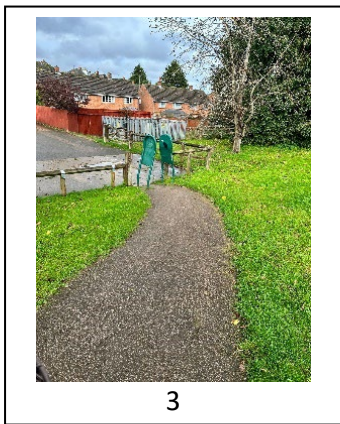
(5) "The path just stops, so would be hard to push a buggy on and for anyone using a wheelchair or other wheeled aids."



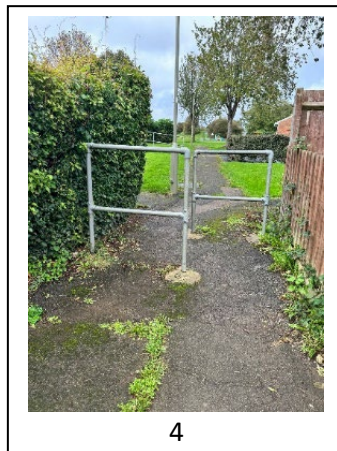
1



2



3



4



5

Uneven paths and surfaces

(1) "Really lovely green space in People's Park but uneven paths could cause accessibility issues."



1



2

(2) "Really uneven surfaces by the skate park in Princess Diana Park, could be a trip hazard especially if people are using the area for their scooters etc."



OUTDOOR LEISURE AND SPORT

Princess Diana Park and People's Park were thought highly of by participants, with all routes that visited these spaces scoring it over 75%. Residents felt that *"there is a good selection of outdoor sports areas in this area."*

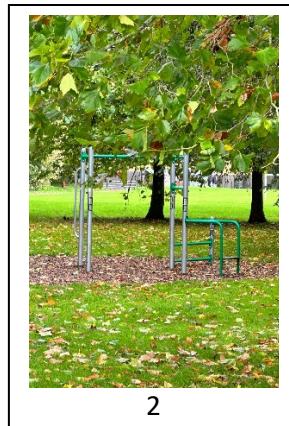
WHAT DO RESIDENTS LIKE ABOUT OUTDOOR LEISURE AND SPORT IN BANBURY?

Outdoor gym equipment

(1) *"Great range of gym equipment to use in People's Park for people to use for free, could be nice to add some wild flowers around the edge or maintain the surface around it."*

(2, 3) *"Good access to outdoor gym equipment at Hastings Park."*

(4) *"Skate park in Princess Diana Park, adds to the great variety of activities in this park."*





WHAT ARE BARRIERS TO ACCESSING OUTDOOR LEISURE AND SPORT?

Maintenance

“The multi-use games area in Fry’s Hill Park is fantastic and well-lit but it would be better if we could have some more dotted around the estate, maybe in some of the green space that isn’t being used”.

(1) “Football nets at Princess Diana Park could do with a bit of love.”

(2) “Basketball nets in Princess Diana Park. Not too bad condition. Access Sport have a project that could help regenerate basketball courts that need it.”

(3) “A multi-use games area in People’s Park, could do with a bit of TLC.”

(4) “Good selection of things to do in People’s Park, but could be good to have surfaces a bit smoother so it doesn’t get big puddles as it could distract people from using it all year round.”

(5) “Good multiuse games area in Princess Diana Park, could be lit though.”





WHAT IDEAS DID PARTICIPANTS COME UP WITH TO SUPPORT RESIDENTS IN BANBURY TO BE ACTIVE IN THEIR NEIGHBOURHOOD?

Supporting walking and pavement use

Some of the key issues identified in the scans require the attention of local authority. These include:

- Pavement maintenance
- Maintenance of greenery
- Lack of safe crossings
- Safety issues, which was raised by all participants, particularly when thinking about walking in the evening or night. There needs to be joint work between the community, local authority, and the police, to look into how to create a greater sense of safety in the evenings so that paths and parks can be accessed safely.

Participants generated ideas which would encourage more walking and wheeling in the neighbourhood:

- Ensure walking routes are joined up (dropped kerbs and crossings)
- *“Road sweepers on residential roads, I live on Warwick Road and there is rubbish everywhere.”*
- *“A pedestrian crossing over the other side of canal to shopping centre.”*
- *“Pavements to be level and make sure the curbs are dropped and match.”*
- *“Proper clean ups where there are road works.”*
- *“Large potholes to be filled in.”*
- *“Safer road crossings, especially outside schools.”*
- Creation of community gardens and flowerbeds
 - (1) *“Opportunity for some flowerbeds.”*
 - (2) *“Opportunity for flowerbeds along Ruscott Avenue.”*
 - (3) *“Another opportunity for flowers/shrubs? By Princess Diana Park.”*

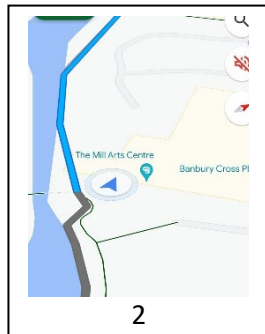




Supporting cycling and road use

Participants suggested that cycling and road use in Banbury could be encouraged by:

- Increasing cycle paths in the area
- Developing maps with safe cycle routes to local assets – this could include producing a cycle map so that people are encouraged to take safe alternative routes.
- *“Wide paths for shared travel.”*
- Increasing the bike locking facilities in the area (this was suggested on 90% of routes)
 - (1, 2) *“Opportunity for more bike parking outside The Mills Art Centre.”*
 - (3, 4) *“Opportunity for cycling parking outside this area of shops and pharmacy.”*



Playgrounds

Playgrounds in Banbury Neithrop and Ruscote are valued, but there are ways in which they could be improved to increase the feeling of safety and to encourage more use of the facilities.

Some issues identified require attention from local authorities and the parish council, including:

- Increasing the availability of accessibly play equipment (such as basket swings, accessible roundabouts and slides, and sensory boards)
- Replacing surfacing which has become worn or very uneven
- Adding surfacing to areas which are just grass to make them more accessible to those wheeling



- Adding fencing to the playground in Princess Diana Park, to ensure that families can use the facilities without worrying about dogs or road safety
- Removing fly tipped waste
- *“Improve playground at Spice Ball; bouncer, monkey bars, covered area for children to play in bad weather.”*

There were suggestions of how community and resident groups could play a role in improving the use of playgrounds too:

- Organise regular litter picks
- Remove graffiti or create a community painting over the graffiti

Parks and Green Spaces

Participants reported that there was a lot underutilised green space in Banbury. They made suggestions for how the space could be improved, providing more opportunities for physical activity and to improve the aesthetic of the area:

- More wildflowers dotted around the neighbourhood
- Maintenance of greenery within parks and green spaces

Outdoor leisure

Participants thought that, although the leisure facilities in Banbury are valued and appreciated by residents, there are a lot of ways in which the facilities can be improved to encourage more use.

Some of the suggestions would require working with the parish council and local authorities:

“Outdoor leisure equipment to be regularly maintained, checking on football and basketball nets, etc.”

Participants also suggested that community and resident groups could come together to create community paintings which could make the outdoor areas look more attractive and encourage more people to use the facilities.



WHAT ARE THE NEXT STEPS?

The results of the Banbury Active Neighbourhood Scan demonstrated a need for further engagement with communities in the area. There are plans in place to work with more schools, youth clubs, and other specific community groups, to ensure that we are as well-informed as possible and that the feedback reflects the views of residents more accurately. We will also be proactively sharing this insight with key partners, planners, and developers, to help create long-term change, and importantly will be investing small amounts of funding, with potential for these to be matched, so that we can turn residents' ideas to create more active neighbourhoods into reality.

Oxfordshire on the Move

December 2023